

Your practice is *our* inspiration.®

**Herculite Ultra** | Where legacy & advanced technology meet



# Herculite Ultra

Ushering in a new era of resin restorative dentistry



After 25 years as the industry standard, we took a powerful, trusted brand and applied our expertise in resin restorative technology and composite innovation to bring you Herculite® Ultra—strong and durable for posterior restorations, excellent esthetics for anterior restorations.

*Herculite has been my gold standard for universal composites since 1989. With nanotechnology, Herculite Ultra now maximizes handling, polish, and durability.*

*A great product just got better!*

*– Dr. Bruce LeBlanc*

## Features

**Optimal handling, non-slumping.** Superb ease of placement.

**Long-lasting polishability.** Maintains lifelike luster long after initial restoration.

**Herculite gold standard technology.** Proven 20+ years of experience.

**High wear strength and mechanical properties.** Long-lasting and durable.

**Chameleon-like quality.** Superior tooth-blending effect enabled by optimized filler size.

### Anterior



Case images courtesy of Dr. Bruce LeBlanc.

### Posterior



Case images courtesy of Dr. Simona Cuevas.

## The Science Behind Herculite Ultra

### Filler Technology

#### Prepolymerized Filler (PPF)

Large enough to increase loading, our PPF is a proprietary blend of low-shrinkage resin, barium glass and nanoparticles, so plucking becomes a nonissue.

- Exceptional ease of polish and gloss retention
- Enhanced handling characteristics
- Decreased polymerization shrinkage

#### Silica Nanofiller

(20 – 50 nm)

- Enhanced polish
- Decreased shrinkage
- Optimal handling

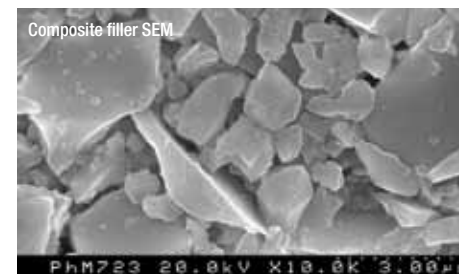
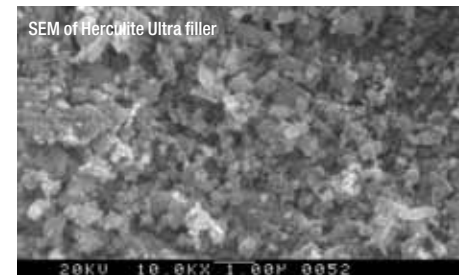
### Compare to Other Composites

Plucking, or natural wear over time, tends to occur faster in restorations with larger particles, decreasing the overall life and esthetics of the restoration.

#### Point 4 Filler

(barium glass filler of 0.4  $\mu$ m average size)

- Clinically proven durability
- Clinically proven polish



### Time-Tested Herculite Technology

The 20+ year chemistry of the Herculite resin matrix results in:

- Exact Vita® shade matching and color stability
- Consistent clinical performance and longevity



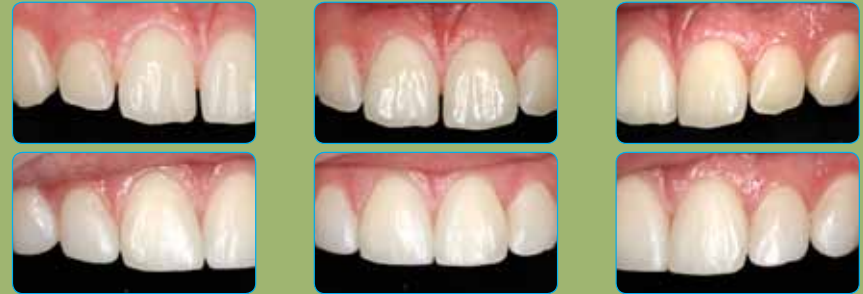
8-year-old incisal restorations using Herculite. Case image courtesy of Dr. Bruce LeBlanc.



13-year-old restoration on bicuspid using Herculite. Case image courtesy of Northwestern University.

Along with high gloss retention and true Vita® shade match, the light refraction properties of Herculite® Ultra allow single-layer restorations to blend flawlessly with the surrounding tooth structure. The need for multi-layer restorations is eliminated, resulting in a simplified shading system that ultimately enhances esthetics.

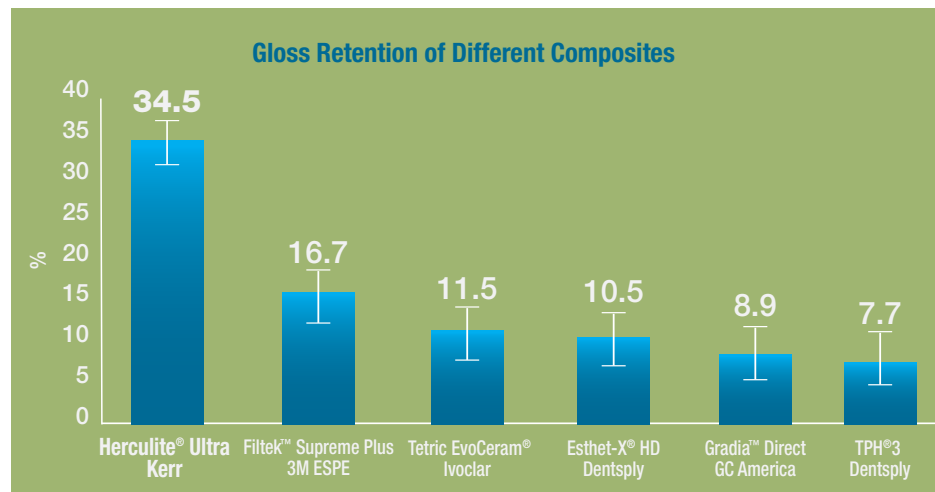
#### Herculite Ultra Anterior Technique



Case images courtesy of Dr. Chris Ho

## Research

Herculite Ultra optimized resin matrix works in harmony with Kerr's 0.4 micron proprietary filler—as evident in our composite brands Point 4 and Premise—and nanotechnology to create the ideal composite. Three fillers—prepolymerized filler (PPF), nanoparticles (20 – 50 nm), and a submicron hybrid filler (0.4 micron)—work together to achieve the ultimate esthetics and strength. The Herculite resin matrix is now optimized to yield creamy yet sculptable handling.

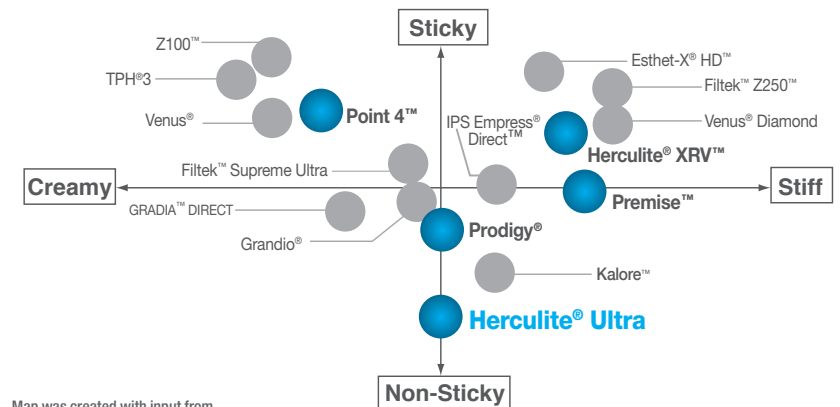


Gloss is measured after cured specimens are toothbrush abraded at 10,000 cycles (350 g pressure, 90 strokes per minute). Study conducted by Nova University. Data available upon request.

### Physical Properties

Load Weight (%)	78
Flexural Strength (MPa)	135
Flexural Modulus (MPa)	9400
Compressive Strength (MPa)	462
Volumetric Shrinkage (%)	2.7
Gloss 60 Degrees (Leco)	41
Gloss 60 Degrees (Toothbrush)	52
Radiopacity (% Aluminum)	250

### Handling Comparison Map



Map was created with input from various clinicians and Kerr R&D.

Your practice is *our* inspiration.®

## Ordering



**34333 Herculite Ultra Intro Kit**  
 10 Herculite Ultra Unidose® Tips (2 g) in A2, 10 Herculite Ultra Unidose Tips (2 g) in A1, 1 Revolution® Formula 2™ Flowable Syringe in A2 (1 g), 10 Revolution Flowable Tips, 1 Large Gray Composite Gun, 20 OptiBond® All-In-One Unidose Tips (3.6 ml), 50 Disposable Applicators

### Herculite Ultra Syringe Refills

34337	A1 Enamel	34774	C3 Enamel
34338	A2 Enamel	NEW 35165	C4 Enamel
34339	A3 Enamel	34775	D2 Enamel
34447	A3.5 Enamel	NEW 35155	D3 Enamel
34771	A4 Enamel	NEW 35156	D4 Enamel
34340	B1 Enamel	34342	A2 Dentin
34772	B2 Enamel	34343	A3 Dentin
NEW 35153	B3 Enamel	NEW 35157	B1 Dentin
NEW 35154	B4 Enamel	34344	Light Incisal
34341	C1 Enamel	34336	XL
34773	C2 Enamel		

### Herculite Ultra Unidose Refills

34347	A1 Enamel	34779	C3 Enamel
34348	A2 Enamel	NEW 35166	C4 Enamel
34349	A3 Enamel	34780	D2 Enamel
34448	A3.5 Enamel	NEW 35161	D3 Enamel
34776	A4 Enamel	NEW 35162	D4 Enamel
34350	B1 Enamel	34352	A2 Dentin
34777	B2 Enamel	34353	A3 Dentin
NEW 35159	B3 Enamel	NEW 35163	B1 Dentin
NEW 35160	B4 Enamel	34354	Light Incisal
34351	C1 Enamel	34346	XL
34778	C2 Enamel		

## Complementary Products

### Bonding Agents

OptiBond® All-In-One  
 OptiBond® Solo Plus™  
 OptiBond FL®



### Curing Lights

Demi™ Plus L.E.D. Light Curing System  
 Optilux 501

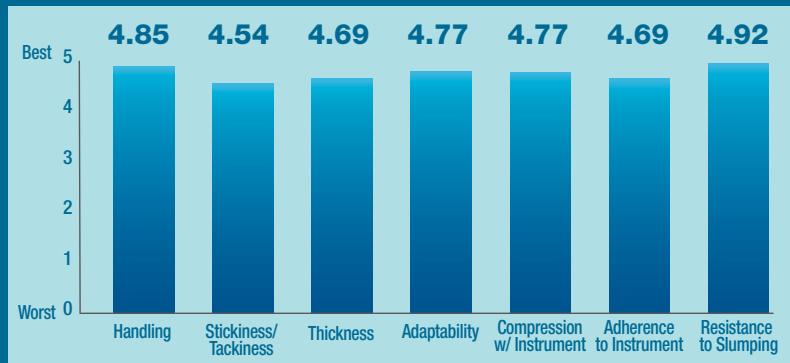


### Flowable Composites

Vertise™ Flow  
 Revolution Formula 2  
 Premise™ Flowable



## Here's what clinicians are saying about Herculite Ultra



Data available upon request.

90% of focus group attendees said they would purchase Herculite Ultra over their current composite.

“Adapts really well, not sticky at all, really sculptable.”

“Superb for a nanohybrid. Best composite ever.”